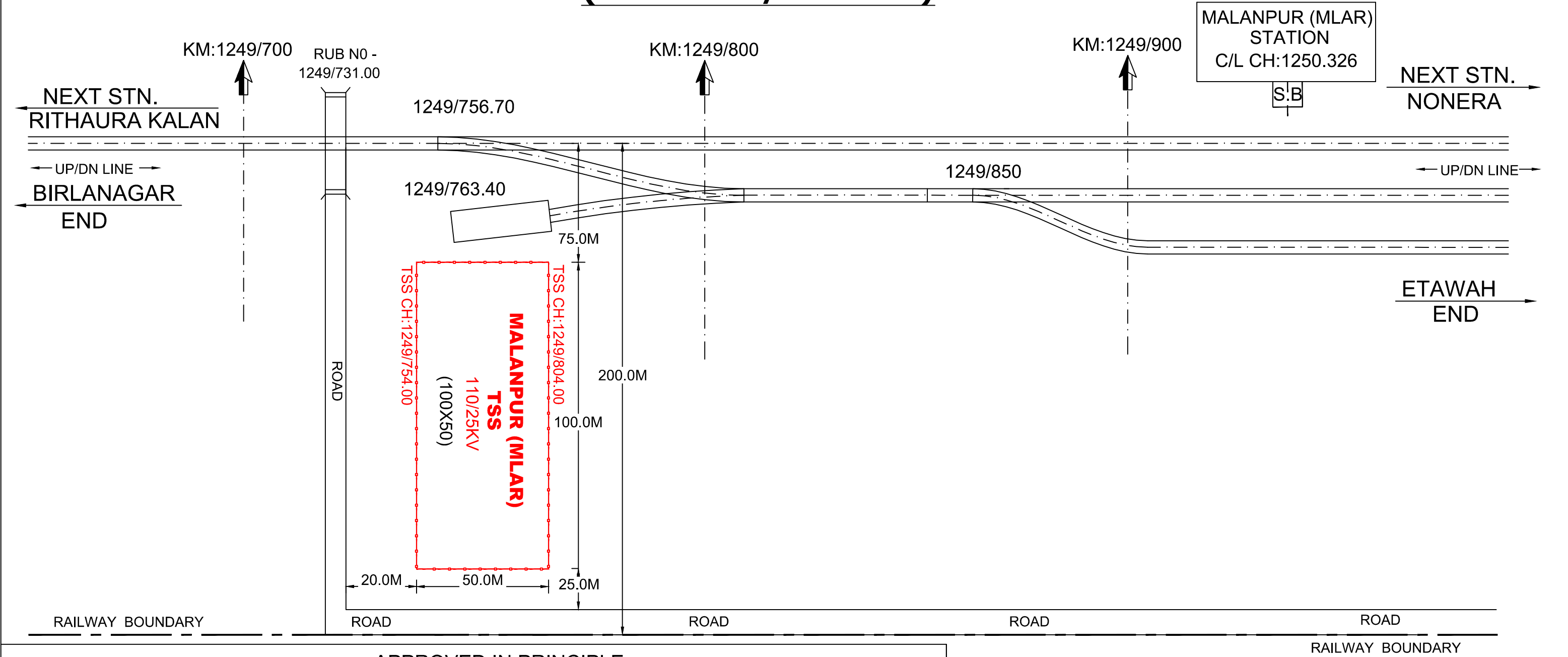


PROPOSED SITE PLAN FOR MALANPUR/TSS
(KM : 1249/700-800)



APPROVED IN PRINCIPLE			
RE OFFICER		NCR OFFICER	
CPD/RE/LKO	Dy.CEE/RE/LKO	DRM/NCR/JHS	Sr.DEN(C)/NCR/JHS
Dy.CE/RE/LKO	DEE/RE/LKO	Sr.DEN/NCR/JHS	Dy.CE/C-II/NCR/JHS
SSE (OHE-)/RE/LKO	for NATIONAL	AXEN/C/NCR/JHS	Sr.DEE/TRD/NCR/JHS

NORTH CENTRAL RAILWAY		
DRG.NO:- LOCATION PLAN/BLNR-ETW/TSS/MLAR-1		DATE:-10-7-2018
PROPOSED LOCATION PLAN OF MALANPUR TSS OF JHANSI DIVISION	RAILWAY ELECTRIFICATION LUCKNOW	RE
	Prepared By:- NATIONAL ENGINEERING SHAKUNTALAM* L-3 Vinoba Nagar, Bilaspur (CG)-495001.	GR.239
	SCALE: NTS	

- LEGEND :-
- 1. EXISTING WORK SHOWN IN BLACK
 - 2. PROPOSED WORK SHOWN IN RED